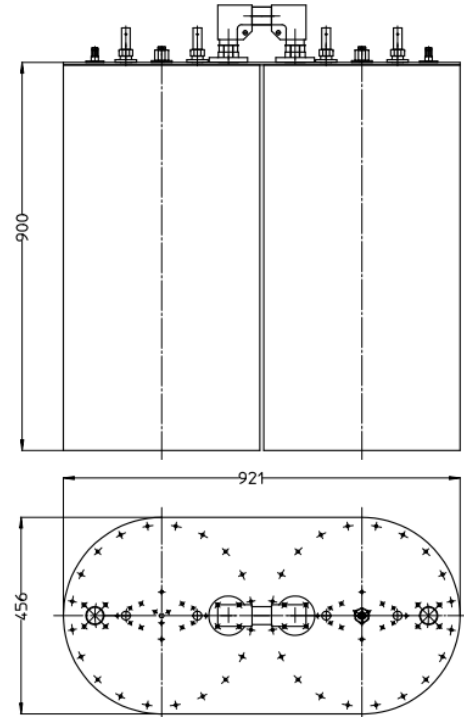


10.000W 2-CAVITIES FM FILTER

Model: 322210000

- TEMPERATURE COMPENSATION (INVAR)
- EXTREMELY STABLE
- LOW INSERTION LOSS
- SILVER PLATED COMPONENTS
- RUGGED FINISHING
- NATURAL CONVECTION COOLING
- FINE TUNING
- IN/OUT IMPEDANCE 50Ω



TECHNICAL SPECIFICATIONS

Configuration	2 Cavities Response
Frequency Range	87.5 – 108 MHz
Maximum Input Power	10.000W
IN/OUT Connectors	1"5/8 EIA
IN/OUT Impedance	50Ω
Insertion Loss f0	< 0.2dB
Bandwith	Tunable
Return Loss (@f0 ± 150KHz)	>27dB
Attenuation (@f0 ± 2MHz)	>22dB
Temperature Stability	< ± 2KHz/K
Working Temperature	-5°C to 45°C
Dimension	456x921x1100(H)
Weight	50Kg
Cooling	Air Convection