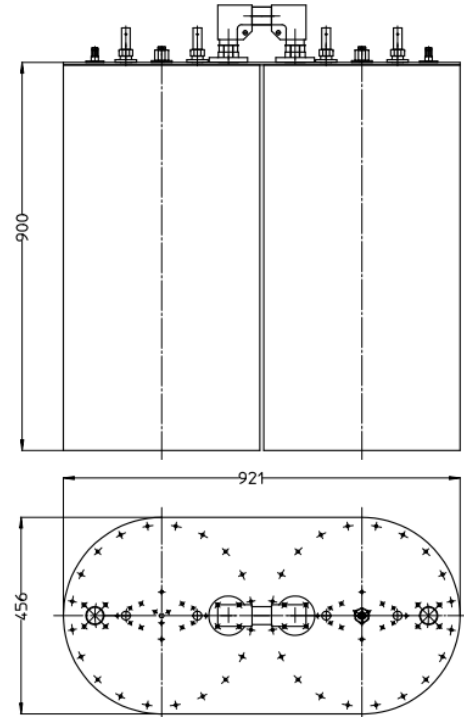


# 10kW 2-CAVITIES FM FILTER

**Model: 322210000**

- TEMPERATURE COMPENSATION (INVAR)
- EXTREMELY STABLE
- LOW INSERTION LOSS
- SILVER PLATED COMPONENTS
- RUGGED FINISHING
- NATURAL CONVECTION COOLING
- FINE TUNING
- IN/OUT IMPEDANCE 50Ω



## TECHNICAL SPECIFICATIONS

Configuration	2 Cavities Response	
Frequency Range	87.5 – 108 MHz	
Maximum Input Power	10.000W	
IN/OUT Connectors	1"5/8 EIA	
IN/OUT Impedance	50Ω	
Insertion Loss f0	< 0.2dB	
Bandwith	Tunable	
Return Loss (@f0 ± 150KHz)	>27dB	
Attenuation (@f0 ± 2MHz)	>22dB	
Temperature Stability	< ± 2KHz/K	
Working Temperature	-5°C to 45°C	
Dimension	456x921x1100(H)	
Weight	50Kg	
Cooling	Air Convection	