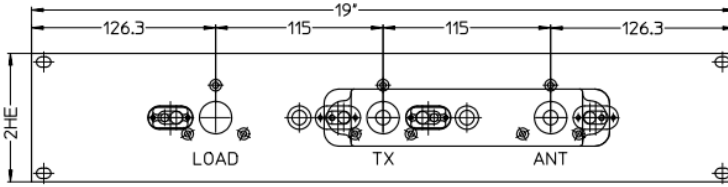
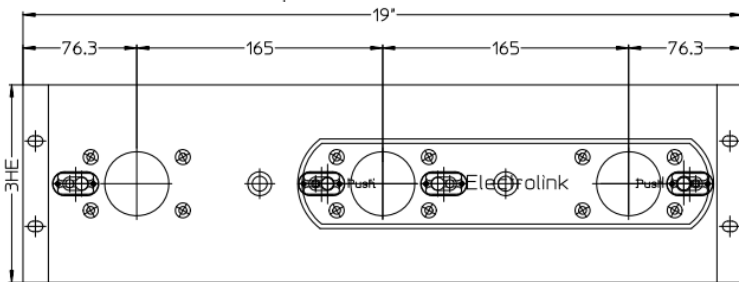
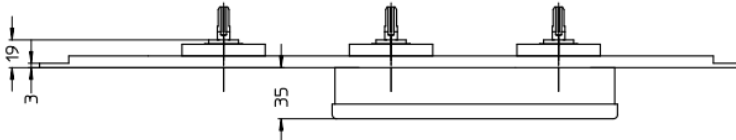


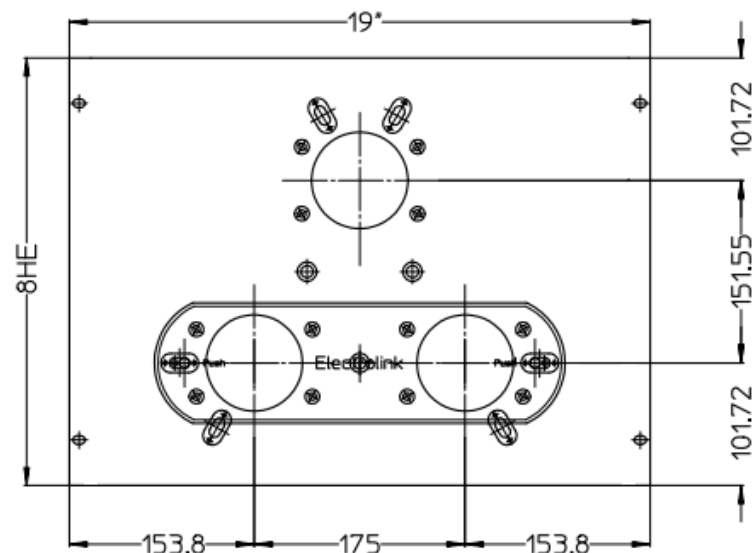
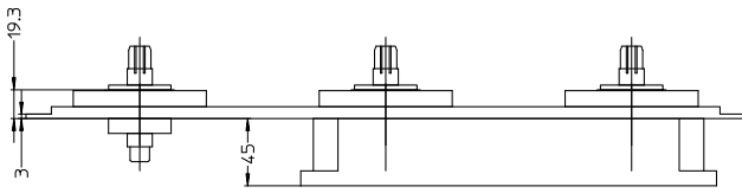
Patch Panel



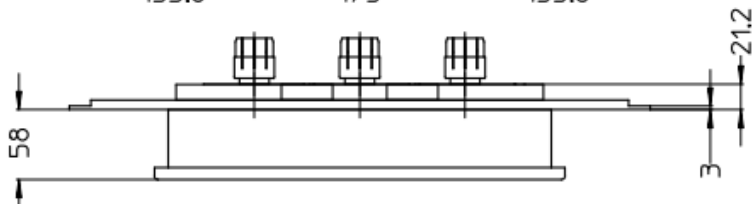
Model: 20100014

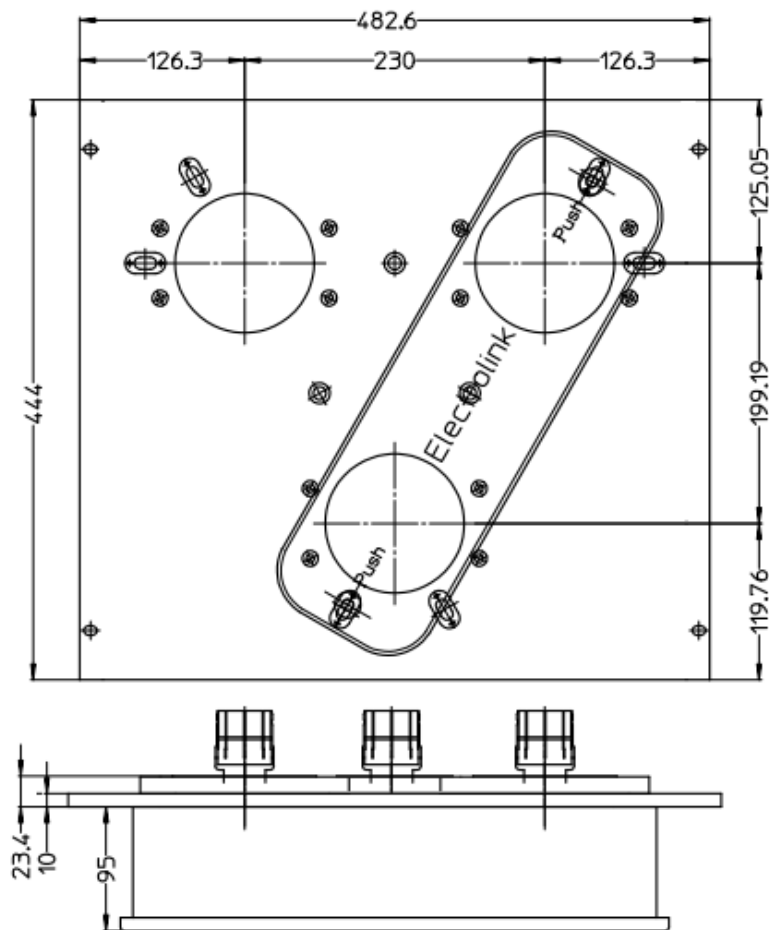


Model: 20100012



Model: 20100015





Model: 201000040

TECHNICAL SPECIFICATIONS	7/8"	1" 5/8	3" 1/8	4" 1/2
Code	201000014	201000012	201000015	201000040
Impedance	50Ω	50Ω	50Ω	50Ω
Average Power FM (II Band)	≤ 5kWrms	≤ 15kWrms	≤ 45kWrms	≤ 75kWrms
Average Power VHF (III Band)	≤ 3kWrms	≤ 7kWrms	≤ 25kWrms	≤ 50kWrms
Average Power UHF (IV/V Band)	≤ 2kWrms	≤ 5kWrms	≤ 12kWrms	≤ 25kWrms
Frequency Range	DC÷1GHz	DC÷1GHz	DC÷1GHz	DC÷1GHz
Working Voltage at sea level	2.5kV - 50/60Hz	4.7kV - 50/60Hz	9.5kV - 50/60Hz	12kV - 50/60Hz
Proof Voltage at sea level	3.8kV - 50/60Hz	7kV - 50/60Hz	14kV - 50/60Hz	19kV - 50/60Hz
Dielectric	Air	Air	Air	Air
Cut off frequency for H ₁₁ mode	6.3GHz	3.2GHz	1.6GHz	1.2GHz